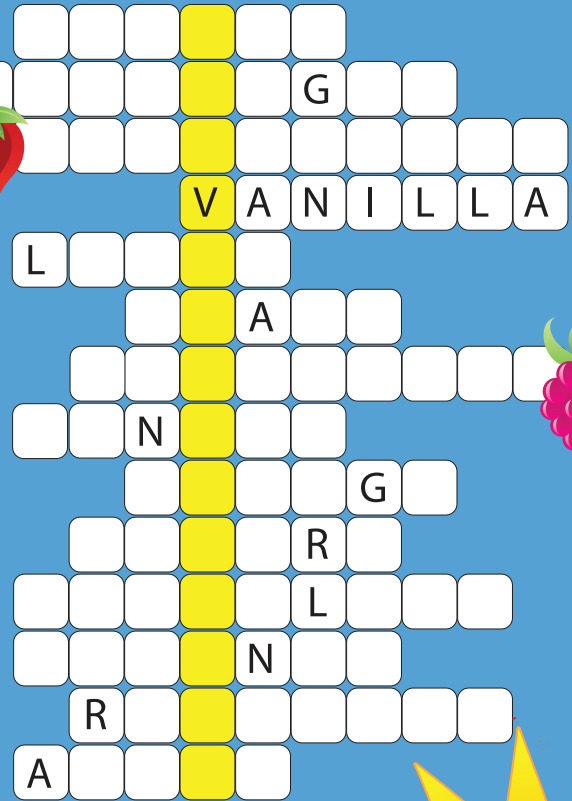


FUN PAGE

CROSSWORD

To solve the puzzle, find the correct place for each flavor listed below. We helped you with some letters and pictures. Good luck!

APPLE, BANANA, BUBBLEGUM, CHERRY, CHOCOLATE
COCONUT, COFFEE, GRAPE, LEMON, ORANGE, RASPBERRY
ROOTBEER, STRAWBERRY, VANILLA



WORD HUNT

Find the most popular FLAVORx flavors below. Write them down.

W E F R G R A P E D Q L E F G Q
R R F D G N O T F J Q T V R X L
F J O N K B U B B L E G U M A E
U L R V R T O F D W M X P X R M
Q S A W A T E R M E L O N C T O
G H N U R I L P O J N R F K W N
L O G N T Y U G H U N T R I L N
B R E L G U M A P U L W V R T L

1.

2.

3.

4.

5.

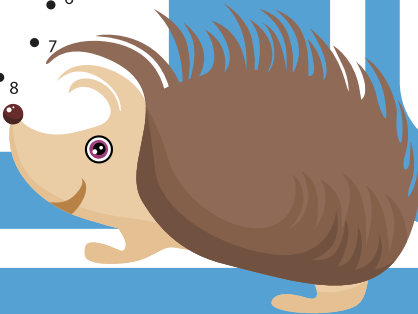
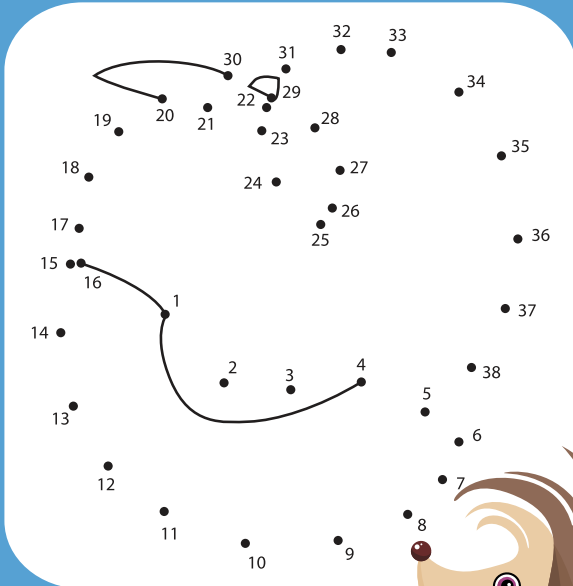


Walgreens

AT THE CORNER OF HAPPY & HEALTHY®

GUESS WHAT?

Connect the dots to find hedgehog's favorite FLAVORx flavor.



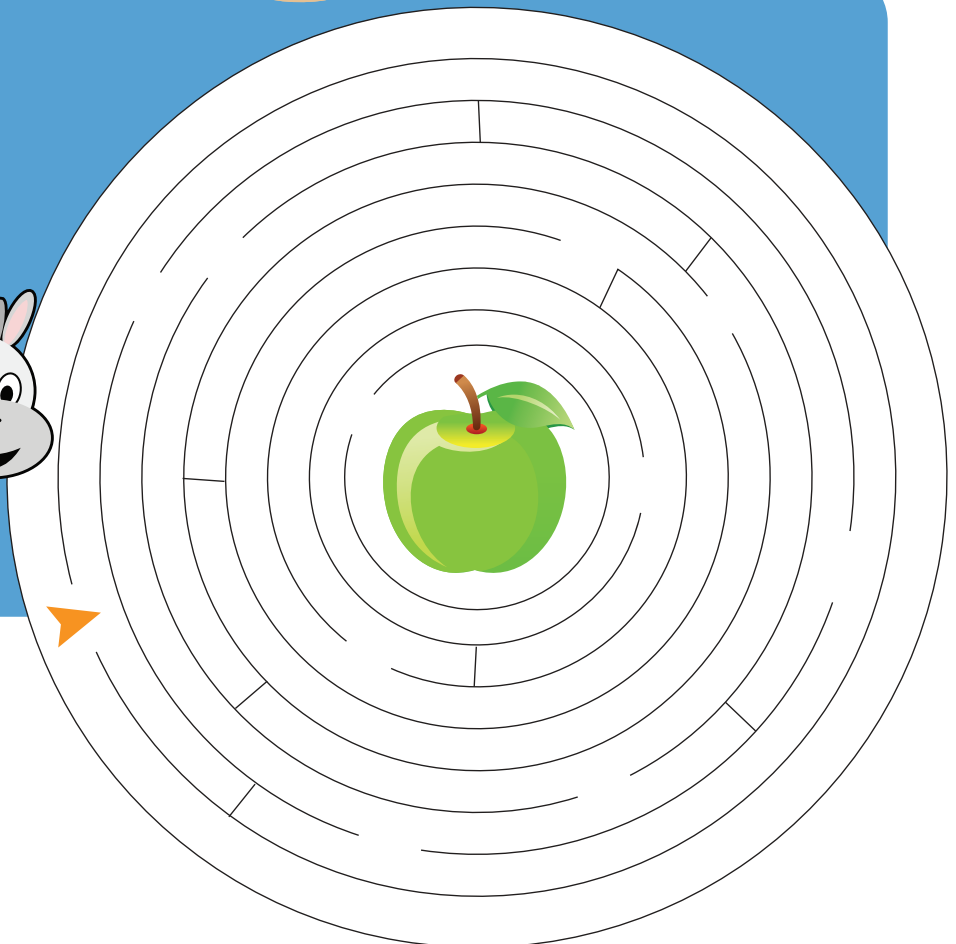
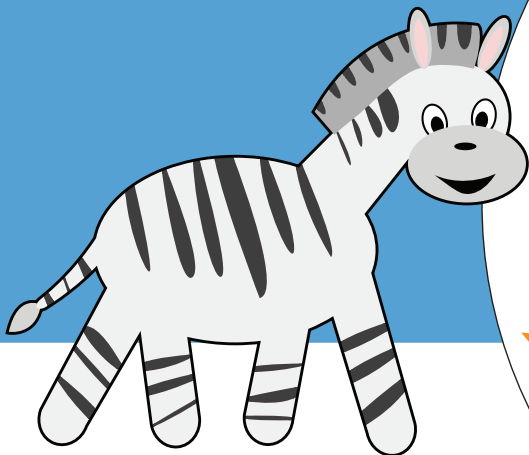
PAIRS

Which spoon does not have a pair?



MAZE

Can you help zebra get to the sour apple?



Walgreens

AT THE CORNER OF HAPPY & HEALTHY®